

GPL ENDOWMENT TRUST



ensuring our enduring treasure

REPORT AND APPEAL TO THE COMMUNITY | NOVEMBER 2011

LEADING EDGE LIBRARY



The GPL Endowment has allowed the library to

become a leader in offering new services from E-readers to free downloadable music from Freegal, and Wii games and laptops to borrow.

The GPL Endowment Trust was established in 1998 to support the library by providing annual grants for collections, services and special needs. These grants allow us to stretch our services and

offerings beyond the town's annual operating budget. As most readers know, the town has worked hard to maintain services and hold costs down in a very difficult economic time. Consequently the library's operating budget has decreased by 31% over the last 4 years. The Endowment has supplemented programs for all ages, helped to grow the adult travel and history collections, as well as purchase audio books for teens. What was new this year was their willingness to support innovative services as shown below.

An E-reader collection was started with two Kindles, two Nooks (and later added the little Nook) and a Sony E-reader. E-readers have become so ubiquitous that some people ask the question, "Will we need a library?" The answer from us will not surprise you.

Yes, of course Groton needs our library but services and "books" are changing rapidly. The Endowment gives us the ability to offer these new products. Also, the library is planning to contract with e-content providers in the near future.

Free music via a GPL library card (and a PIN) was also introduced as a pilot program this year. Every GPL card holder can download three free songs a week from the Sony Music catalog. Simply go to gpl.org, click on Freegal for details and

get your favorite songs—they are yours to keep.

Additionally, the GPL Endowment supported



the hardware and teachers for the library computer lab which offered classes on resume writing, using LinkedIn and other skills for job seekers. Additional classes will be offered in 2012. The library staff continually works to meet the needs of Grotonians which is made possible due to the support of the GPL Endowment Trust.

NEW online giving option

Our new website allows you to:

- ✓ See what the Endowment is supporting now
- ✓ View current and past newsletters
- ✓ Contact us with questions, or ideas for future programs/projects

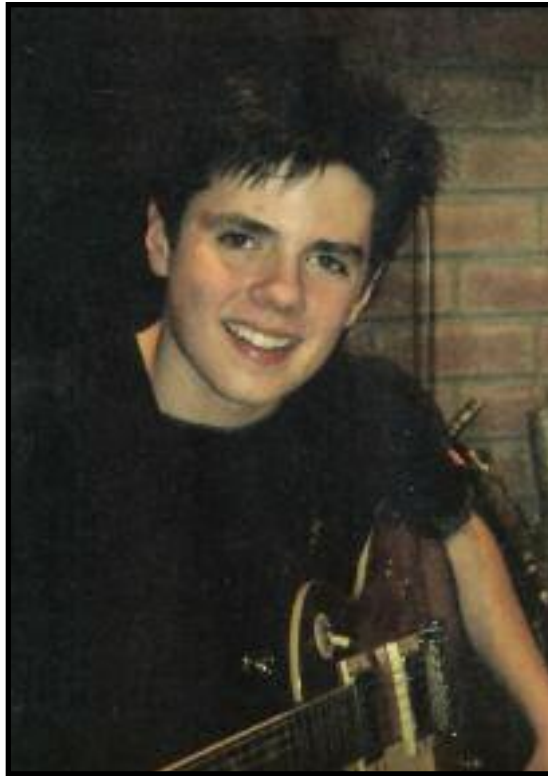
- ✓ Give with ease to the Endowment via 

Visit gplendowment.org today.

Remembering Nick Hersey

When Reverend Elea Kemler asked my husband Howard and me if there was an organization we wanted people to donate to in memory of our 21-year-old son Nicholas, the first thing that came to my mind was the library. As we prepared for his memorial service—and as we continue to live with the tragedy of Nick's death—what I find myself wanting to share is Nicholas, through those things that made him who he was, and the library is central to who our son was. As someone who loved books, music and movies, Nick also loved the fact that these resources are available to everyone through the library.

Nicholas wrote short stories, poetry and music, but more than that, he embraced communication in all forms from the written word, to music, movies, and video games. He experienced each interaction with a piece of writing or music as an adventure or an opportunity to learn something new. Nicholas always wanted to be on that next adventure which included learning and participating in



discussions. Additionally, our library also provided a haven for Nick when life was difficult and life is sometimes difficult for all of us.

That is what the Groton Public Library is: a place to begin an adventure, a safe haven, an institution through which we can reinvent ourselves by gaining knowledge. A library represents the best of us. The fact that it is free and open to all lifts it beyond being merely a collection and turns it into an opportunity. The public library is an open door, a widened boundary, and a place which offers private moments to try the daring and new with minimal risk. A library is also a foundation from which to launch ourselves. Nick

will live on in our memories—yes—but also in the things he read and wrote. He—like all of us—exists in stories and songs. So, when I think of our son and the heights he reached in the short time he was with us, I can think of no more important institution to donate to than the Groton Public Library Endowment Trust.

We gratefully acknowledge the individuals and corporations who made gifts to the GPL Endowment Fund from November 2010–June 2011.
Patricia and James Aha
Nancy and N. Carl Anderson
AS&E Donors
Aved Electronics, Inc.
Alice and William Barbo
Lou Ann and Eric Black
Susan and Thomas Boggiano

Dawn and Levent Bozkurt
Edward Bretschneider and Joanne Cotter
Elizabeth and Charles Bridge
Nancy and David Bugbee
Dianne and Henry Bunis
Chris Christie
Dell Corporation
The Dodson Family
George E. Downey
Marjorie and William Eger
Alison and Richard Enright
Jacqueline and John Eschle

Deborah K. Fleischman
Donna and Paul Funch
Diane and Marc Gavel
Heather and James Greacen
Deborah and Larry Gresock
Holly and Richard Guaraldi
Zoa Guernsey
Elson T. Harmon
Karen and William Harte
Geraldine and Paul Harter
Shirley and Hubert Hersey
Alan Hoff and

Jennifer Ablard
Beth Smith Horton
Joan Huber
IBM
Diana and Stephen Keaney
William Knuff and Kristine Geils
David Woods and Nancy Krolewski
Laura K. LaMalva
Barbara and Thomas Lamont
Connie and Ted Lapres
Nancy A. LeMay

REMEMBERING FAMILY AND FRIENDS

Memorial gifts to the GPL Endowment, such as those made this year in honor of Nick Hersey, are a thoughtful way to remember a person who was important to you during their lifetime. Each memorial donation signifies a caring tribute to the person in whose name the gift is made, and helps to perpetuate that person's interest in and love of the library and its abundant offerings.

Dear Groton Neighbor,

We, the Trustees of the Groton Public Library Endowment Trust, present this report to you at the end of the fourteenth year of the Endowment Trust's operation for three reasons:

- To give you an update on the financial health of the fund
- To inform you of the many ways in which the Trust benefits the library
- To ask for your support.

The Financial Statement of the Trust as of June 30, 2011, shows assets totaling \$1,734,152 after expenditures of \$64,032 on behalf of the library during Fiscal Year 2011. The complete financial report is available for your review at the library.

At our May meeting the Endowment trustees approved \$61,950 for special projects and enhancements for the library in Fiscal Year 2012. Please take a few minutes to read this annual newsletter and see if you have enjoyed some of the many services and programs provided by the GPL Endowment.

The Endowment Trust was established in 1998 by people like you—generous citizens and businesses in Groton. It provides a stream of investment income which helps to make the Groton Public Library the best it can be. We wish to thank those who contributed in the past and to invite everyone to consider supporting this vital fund.

New this year is the ability to donate to the GPL Endowment Fund via PayPal. Visit www.gplendowment.org or use the enclosed envelope as a reminder to include the Trust in your annual giving.

Sincerely,

The Groton Public Library Endowment Trustees

Robert Weber, Chairman

Connie Lapres

Edward Strachan, Treasurer

Owen S. Shuman, Library Director

Kristen von Campe

Jeanne and Dennis Lex
Karen and Steven
Liljegren
Karen and Robert Loyzim
Eileen and Timothy
Madigan
Julie and Paul Marston
Duane H. Matters
Anne Bell McGinty
J. William Mees
Patricia Nelson and
Garry Roy
Oracle Corporation
Carolyn Perkins
Geraldine M. Perry

Steven M. Rennie
Eleanor S. Riley
Deborah and Jack Rieden
Karen and David Riggert
Barbara Ritz
Stephanie Salem
Charles Schneider
Barbara Seeber-Wagner
Jason Shamberger
H. Lynn and Daniel
Sheehy
Kim and Janet Sheffield
Owen and Stuart Shuman
Dyan and Daniel Sierra
St. George's School

Elizabeth and Albert
Stone
Kristen and Rob Stone
Pam and David Stone
Nancy Stoops and
Marjorie McMillan
Edward Strachan
Barbara Stromsted
Jean and Roger Temple
Patti Jo Thompson and
John Ellenberger
Helen Trimper
Julie and Philip Trudeau
Lois Underwood
Virginia Ann Vollmar

Laura and Gregory
Yanchenko
Gwyn and Allen Weaver
Audrey and James
Western
Susan and D. Scott
Wiggins
Sharon and Jerry Wooding
Dorothy and Andrew
Zale
Julie and David Zeiler

Trust benefits the library's programs for children

SUMMER READING PROGRAM

"We liked earning hours to buy a goat." Once again the GPL Endowment funded prizes to motivate children to read in the summer but new in 2011 was the promise that if the goal was met, the Endowment would purchase a goat for Heifer International. 637 children registered for the reading program and the children (and parents of pre-readers) read over 8,000 hours! The Endowment purchased the goat and the children were thrilled that their efforts helped make a difference to a needy family.



"Excellent show—It was The Best!!" a young attendee exclaimed after seeing the enthralling performance of Tanglewood Marionettes' show, The Dragon King. In addition to this performance for nearly 300 people, the GPL Endowment funded five other events for the summer reading program including a puppet show, drawing and origami workshops and storytellers.

SCHOOL FIELD TRIPS

"I'm in heaven! Thank you for this library!" was the enthusiastic response of a second-grader from Florence Roche Elementary School on a class trip to the library. The students in four 2nd grade classes were researching their family's heritage. Whether it was the nine 1st grade classes getting their first library card, tour, and participating in a scavenger hunt, or the five 4th grade classes studying invasive plants, the scene of a bustling children's department,

buzzing with inquisitive students was a common one because of the Endowment's grant which supports transportation for elementary school students to visit the GPL.



Preschoolers delight in the Tales for Tunes program.

EARLY READER COLLECTION ENHANCED

"I can read! I can read!" Beginner reader books are a great resource for parents whose children are taking their first steps toward reading. Because of the increased demand for beginning readers, we asked the Endowment to fund more phonics books as well as first readers. These books give the emergent reader the ability to gain the skill and confidence to become life-long readers. Check them out for your soon to be reader.



Second-graders are excited to work on a school project at the GPL. Photo by: Dianne Bunis

THE ENDOWMENT EFFECT

The positive effect of the Endowment's commitment to the library's youth services can be seen in every corner of the Young Adult area.

Look around the young adult area next time you visit the library. The cozy café table and chairs for students to do homework or read, the computer desk and laptop to check the catalog and sign up for summer reading, the end-of-shelf display for new books and video games, the extensive audio book collection—are all because of the Endowment.

The Endowment sustains all our programs, by funding engaging guest speakers, exciting summer reading incentives, and delicious refreshments for every occasion. The Endowment has also made possible the purchase of computers, DVD players, a projector, and a Wii gaming system, all for the very popular Movie Nights at the Library and Llama Lounge to which about 50 middle-schoolers flock on school half-days.

The number of programs we have been able to offer over the past 10 years has increased 150% with attendance up 55%! The Endowment is the reason we can take such pride in our phenomenal growth and success.



Top: Teens learn how to make chocolate treats; **middle:** Callum McLaughlin and Emily Francis had as much fun making them as eating the gingerbread houses they made at the Winter in June program; **bottom:** Folding paper can be fun if you have a friend to explain it.

HELPING YOU SAVE MONEY AND HAVE FUN!

One of the most popular services that the library provides is the museum pass program, thanks to the GPL Endowment which sponsors reduced or free admission to 22 area museums, zoos, historical sites, guided tours, and other attractions.

During the past year, **1,378 passes were used by GPL card holders, with total savings to borrowers of \$31,065.** To put it more simply: With the support of the Endowment, a family of four could save over \$51 for admission to the New England Aquarium, or if that same family wishes to go to the Boston Museum of Science, the total admission for four is only \$20. Similar savings or free admissions are available with the 20 other passes.

Here's the list of all the special attractions you can enjoy:

- Boston By Foot
- Institute of Contemporary Art, Boston
- Boston Children's Museum
- Isabella Stewart Gardner Museum, Boston
- Butterfly Place, Westford
- Mariposa Museum, Peterborough, NH
- Davis' Farmland, Sterling
- Museum of Fine Arts
- DeCordova Museum, Lincoln
- Museum of Science
- Discovery Museums, Acton
- New England Aquarium
- Ecotarium, Worcester
- Peabody Essex Museum, Salem
- Fitchburg Art Museum
- Plimoth Plantation, Plymouth
- Fruitlands, Harvard
- Roger Williams Park Zoo, Providence, RI
- Harvard Museum of Natural History
- Worcester Art Museum
- Higgins Armory Museum, Worcester
- Zoo New England, Boston and Stoneham

Additionally, the Groton Garden Club donates passes to Tower Hill Botanic Garden, Boylston, and New England Wild Flower, Framingham.

They are easy to reserve. Go to gpl.org. Click on "Museum Passes" or call 978-448-1167.

BRINGING YOU THE WORLD

The GPL Endowment

brings you the world—from last fall's first-hand reports on China's vibrant economy, music, dance, and changing lifestyles—to last spring's movie, *The Work of 1,000*, followed by a discussion with Groton's nationally-known Marion Stoddart on her role in cleaning up the Nashua River. Watch for the next international series—Egypt—Past, Present &



Future, a timely topic in this time of turmoil and change. Closer to home, the whole family will enjoy the series on dogs in January 2012: Dog Behavior 101 by "dog whisperer" Ray McSoley followed by two other programs on dog care and rescue dogs. Our favorite chef Liz Barbour will return to demonstrate

Cooking with Chocolate just before Valentine's Day, and our dedicated memoir-writing workshop leader, Zoa Guernsey, will offer a spring session of Stories Only You Can Tell. It's a big world and the GPL Endowment is pleased to support programs that nurture a love of learning that bring the world to you.

GrotonREADS 2011 AND 2012

Over 500 Grotonians were introduced to Hmong culture and explored their connections to the immigrant experience during GrotonREADS 2011. The book, *The Spirit*



Catches You and You Fall Down by Anne Fadiman, explored the immigrant experience of a Hmong family as they struggled with their daughter's illness and the cultural differences of the doctors treating her. In addition to book discussion groups The GPL Endowment funded these programs:

A visit by the author Anne Fadiman, the Multicultural Family Festival with ethnic food, music, dance and fashion from around the world, an art show and demonstration of the making of Hmong Storycloth and textiles, a Community Kitchen demonstration of a traditional Hmong feast, a talk (co-sponsored with

the Groton Historical Society) on the history of Hmong people, clan system, marriage and funeral practices.

A highlight of learning about the immigrant experience was hearing from local community members who shared their families' stories of emigrating from Italy, Saudi Arabia and Peru. All of these events made for a captivating month of reading and learning and entertainment.

The GrotonREADS 2012 Book Selection Committee is deciding between a young adult novel based on the Cuban Missile Crises entitled *Countdown* or the



book that the recent movie featuring Brad Pitt was based on—*Moneyball*. March events will either be about 1962's culture and politics or will be based on America's favorite pastime, baseball. GrotonREADS 2012 kick-off event is scheduled for Sunday, January 8.

Be sure to attend to get your book and learn about exciting events in March.

CURRENT PROGRAMS SPONSORED BY THE ENDOWMENT (July 1, 2011–June 30 2012)

ADULT PROGRAMS	\$5,300
ART GALLERY CURATOR AND EXPENSES	\$5,500
BUS TRANSPORTATION FOR SCHOOL VISITS	\$2,000
CHILDREN'S AND FAMILY PROGRAMS	\$9,200
COLLECTION DEVELOPMENT	\$11,150
DIGITAL LIBRARY PROJECT	\$5,000
GrotonREADS 2012	\$6,500
MEMOIR WRITING WORKSHOPS	\$1,600
MUSEUM PASSES	\$7,200
STAFF DEVELOPMENT	\$1,000
YOUNG ADULT	\$7,500
TOTAL	\$61,950



Groton Town Diaries, 1918–1971, available online. Read first-hand accounts of the Hurricane of '38 and other local happenings. Now fully indexed up to 1958, thanks to support from the GPL Endowment and loyal volunteers. Look for the link to the GPL Digital Library on the Groton Public Library website, www.gpl.org.

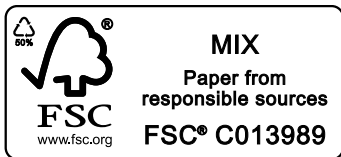
GROTON PUBLIC LIBRARY ENDOWMENT TRUST

P.O. Box 401

Groton, MA 01450

Non-Profit Org.
U.S. POSTAGE PAID
Permit No. 122
Groton, MA

GROTON POSTAL PATRON



Cover image of library by Bob Lotz.

Art GalleryNEWS

The Endowment fills an important niche in the local art scene, serving the community by bringing a wide mix of artists and styles to the library. Curator Deborah Santoro strives to engage Groton Public Library viewers with works that enrich the mind and delight the eye.

Highlights from 2011 include *Cellular Visions*, based on the artistic interpretation of cells. Kay Hartung's colorful installation of enlarged cells led viewers into the gallery.

Coordinating with GrotonREADS, in March we displayed Hmong story cloths and textiles. In September Anne Krinsky exhibited *Shelf Life*, an installation of mixed media panels on shelves, some of which are

specific to the GPL.

Light, Wood, and Bronze: Two Artists Journey will open the New Year in the gallery with sculpture and photography by Linda Hoffman and Sue Salem. Spring 2012 will bring *More Than Words*, a collection of artists' books and book-inspired works by Jeanne Borofsky, Joyce Collier Fearnside, Jan Cadman Powell, and Deborah Read. Don't forget to check the website for notices of upcoming exhibits and workshops!



Left: *Taming the Ox*, a sculpture by Linda Hoffman, and above, Sue Salem's *Wood River*. Both pieces are part of the show, *Light, Wood, and Bronze*, which opens January 2012.